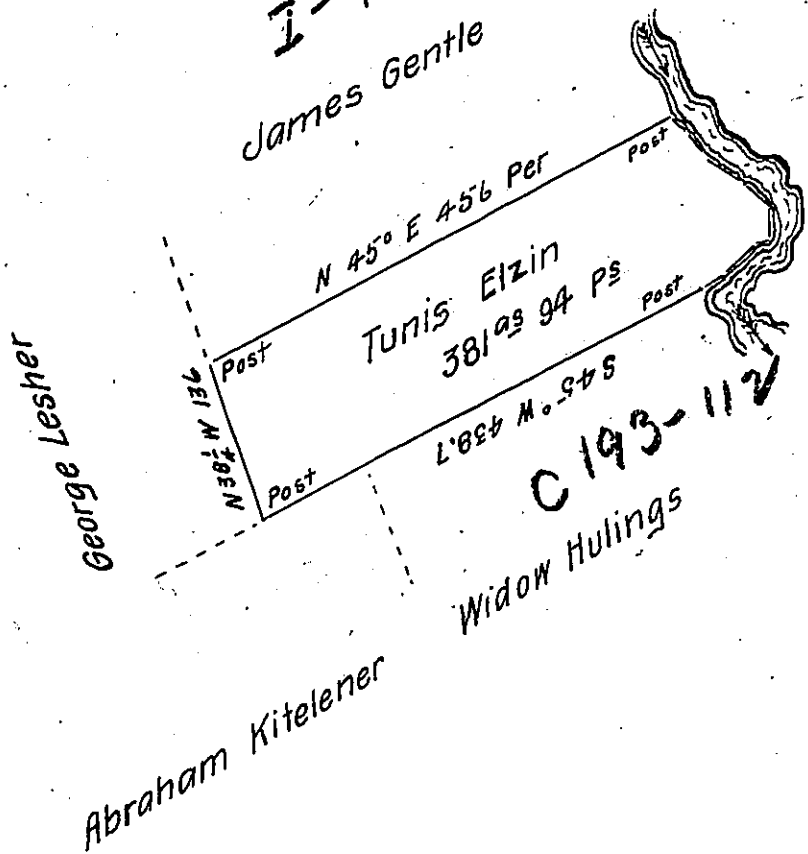


Courses and distances down French Creek beg^d at a Post

S 51° E	9.4
S 58° E	24.0
S 60 ³ / ₄ ° E	41.0
S 81 ¹ / ₂ ° E	32.0
S 5 ¹ / ₂ ° E	31.0
S 37° W	7.8
S 43 ¹ / ₂ ° W	28.6
S 30 ¹ / ₂ ° W	6.8
South	17.3
	<u>197.9</u>

I-497
James Gentle



In pursuance of a Warrant for 350 acres dated the 27th day of August 1801 was surveyed for Tunis Elzin the 27th day of October 1801. the above described Tract of land containing 381 acres 94 perches and allowance of six per cent for Roads &c. Situate on the west side and adjoining French Creek in Fairfield Township Crawford County. It being the same Tract of land that was surveyed for the said Tunis Elzin the 6th day of June 1794 in pursuance of his Improvement dated the 3rd day of April 1792.

William McArthur D. S.

To Samuel Cochran Esquire
Surveyor General

IN TESTIMONY that the above is a copy of the original remaining on file in the Department of Internal Affairs of Pennsylvania, made conformably to an Act of Assembly approved the 16th day of February, 1833, I have hereunto set my Hand and caused the Seal of said Department to be affixed at Harrisburg, this nineteenth day of August 1904.

Joseph R. Brown
Secretary of Internal Affairs.